



**LENS<sup>®</sup>**

**LANDSCAPE  
ENTERPRISE  
NETWORKS**

# Impact Report

Benefits for nature and carbon from transitioning  
to regenerative farming practices

# Contents

<b>LENs in numbers</b>	<b>3</b>
<b>What farmers are saying about LENs</b>	<b>4</b>
<b>Bringing together businesses and land managers to help improve the quality of the land</b>	<b>5</b>
<b>The impact of LENs across Europe</b>	<b>6</b>
Healthy productive soils	7
Thriving biodiversity on farm	8
High water quality and conservation	9
Climate mitigation	10
Benchmarking average emission intensities from farms in LENs	11
<b>Farmer benefits</b>	<b>12</b>
<b>Funder benefits</b>	<b>13</b>
<b>LENs Regen Pathway</b>	<b>14</b>
<b>End notes</b>	<b>15</b>



*LENs has developed over the last few years in partnership with a wide range of expert partners to become a robust model to unlock the efficient scaling of regenerative agriculture and landscape transformation. I hope this openness and transparency will ensure it continues to evolve, to increase impact, efficiency and scaling potential.*

**Andy Griffiths, Global Head of Transformational Partnerships Diageo** ”



**Patrick Barker,  
Farmer LENs  
East of England**

# LENs in numbers

## Reach and engagement

From 25 farms in 2021 to **289** farms in 2024: working across 5 landscapes, impacting **80,465 ha**

**79%**

Farmer retention rate 2023-2024

**€160**

Average funding per hectare

## Trades

**€24,000,000**

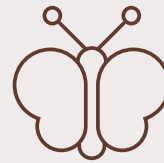
funding to farmers since 2021

**11** organisations pooling funding leading to a tonne of carbon being a **1/3** cheaper than when funding alone



## Impact

**73 ha**



of new biodiversity habitats created since the start of LENs



**47,705 ha**

of LENs-funded practices in 2024, with positive impacts on farm landscapes in England, Hungary, Italy and Poland

**49,370 tCO<sub>2</sub>e**

2024 total emissions reductions and removals (similar to the carbon sequestration of 140 ha of newly planted native woodland over 100 years)



# What farmers are saying about LENS

*"We take care of the soil which produces what is most important to us: wheat and corn. By implementing practices such as substituting synthetic fertilisers with natural ones and cover crops, we can take care of the soil by preventing erosion and improving soil viability. We use machines which can till and sow the soil at the same time, but most importantly they do not disturb soil structure."*

**Włodzimierz Cailer, Poland LENS**

*"I want to find ways to be less reliant on external inputs such as fertilisers, pesticides and fuel. Since being involved in LENS, I have adopted a more proactive approach to regenerative agriculture."*

**Szabó Tamás, Hungary LENS**

*"Right from the start, it appeared to be more farmer-led than any other funding initiative I'd come across—I bid for what we want to introduce rather than having a prescribed list. It's more interesting than ticking a box and filling in a form. LENS involves us in deciding what's best for the individual farm."*

**Philip Raley, Yorkshire LENS**

*"What I like about LENS is how well thought through it is. You can see how considered the process is in terms of engagement with food manufacturers and how that feeds down to farmers. MRV is clearly a really important piece, to ensure that what's being undertaken is robust. It's really positive. LENS has the ability to drive at scale."*

**Guy Thallon, Yorkshire LENS**

*"I secured funding from LENS in 2023 and 2024. I'm hoping to secure further funding in the 2025 trade. I want to plant some wildflower margins to encourage pollinators and I'm investigating different systems for an inter-row weeding equipment trial, which allows for mechanical weeding by a tractor, taking away the need for spraying with chemicals."*

**Andy Falkingham, Yorkshire LENS**

*"With LENS data, I demonstrated that our farm was seeking to transition to regenerative agriculture, reduce carbon emissions and improve soil health. I used the LENS MRV assessment to evidence our farm's natural capital and emissions, and was able to access a credit facility with more favourable terms, including a lower interest rate."*

**Lou Bond, East of England LENS**

*"There is flexibility—more than with any other funding schemes we've been involved in. LENS is now more targeted and they know what people are looking for. The farmer innovation is brilliant. We really like that option."*

**Harry Fromant, East of England LENS**



# Bringing together businesses and land managers to help improve the quality of the land

It is a huge pleasure to present the first **Impact Report from Landscape Enterprise Networks (LENs)**. This report captures our progress over the past five years. It reflects our unwavering belief that environmental sustainability and economic resilience can and must go hand in hand. We must look beyond linear approaches, that address single issues, to work collaboratively across landscapes.

We are witnessing a **shift in momentum** around the need to restore ecosystems, build climate resilience, and regenerate the natural assets on which we all depend. LENs connects businesses, land managers, and public institutions, facilitating investment into the landscapes that underpin our economies, communities, and climate.

This report outlines **our impact** and **shares insights** into how working together achieves more than the sum of our parts. As you explore the stories and data, I hope you will see the potential of what we can achieve when aligning commercial ambition with collaborative regenerative action. In an unpredictable world, the need to build more **resilient systems** and **better manage risk** has never been more critical.

Thank you to our farmers who are responsible for the **actions on the ground** that enhance their farms and the wider landscape. And thank you to the funders, collaborators and other stakeholders who make LENs possible.

**Donald Lunan,**  
**CEO, LENs**



“ We are witnessing a **shift in momentum** around the need to restore ecosystems, build climate resilience, and regenerate the natural assets on which we all depend. ”



## What is LENs?

LENs brings together businesses, public bodies, communities, farmers and land managers, to finance and implement initiatives to improve the health, productivity and resilience of the landscapes they rely on.

Each region has different environmental and supply chain challenges, which are affected by the impacts from climate change and biodiversity loss.

LENs is a flexible model, which recognises these diverse contexts, while providing a common framework to build the resilience of supply chains, farming businesses and the landscapes that support them.

LENs supports farmers on their pathway to regenerative farming, by helping to bridge the gap between public and private financing, providing more predictable funding and offering technical support and knowledge-sharing networks.

This report is based on measured and verified impact, rather than projections. It aligns with the latest requirements from the Greenhouse Gas Protocol's Land

Sector and Removals Guidance and the Science Based Targets initiative's Forest, Land and Agriculture Guidance.

Our impact measurement method is groundbreaking: we are the first multi-stakeholder landscape initiative to produce reports that:

- provide **robust crop carbon footprints** with verified methodologies
- include **carbon removals**
- cover **soil health, biodiversity** and **water** metrics
- are based on **data traceable to farm gate**.

Results have been calculated in accordance with the science-based methods described in the LENs MRV Protocol. Our soil carbon methodology is best-in-class, with baseline data measured on each farm, using advanced statistically representative samples and randomised sampling to reduce bias and provide the most reliable carbon stock assessment.

# The impact of LENS across Europe

In 2024, LENS operated in five regions: England (East of England; Yorkshire), Italy (Veneto & Friuli-Venezia Giulia), Hungary (Western Transdanubia) and Poland (Greater Poland, Kuyavian–Pomeranian, Lubusz & Warmian–Masurian).

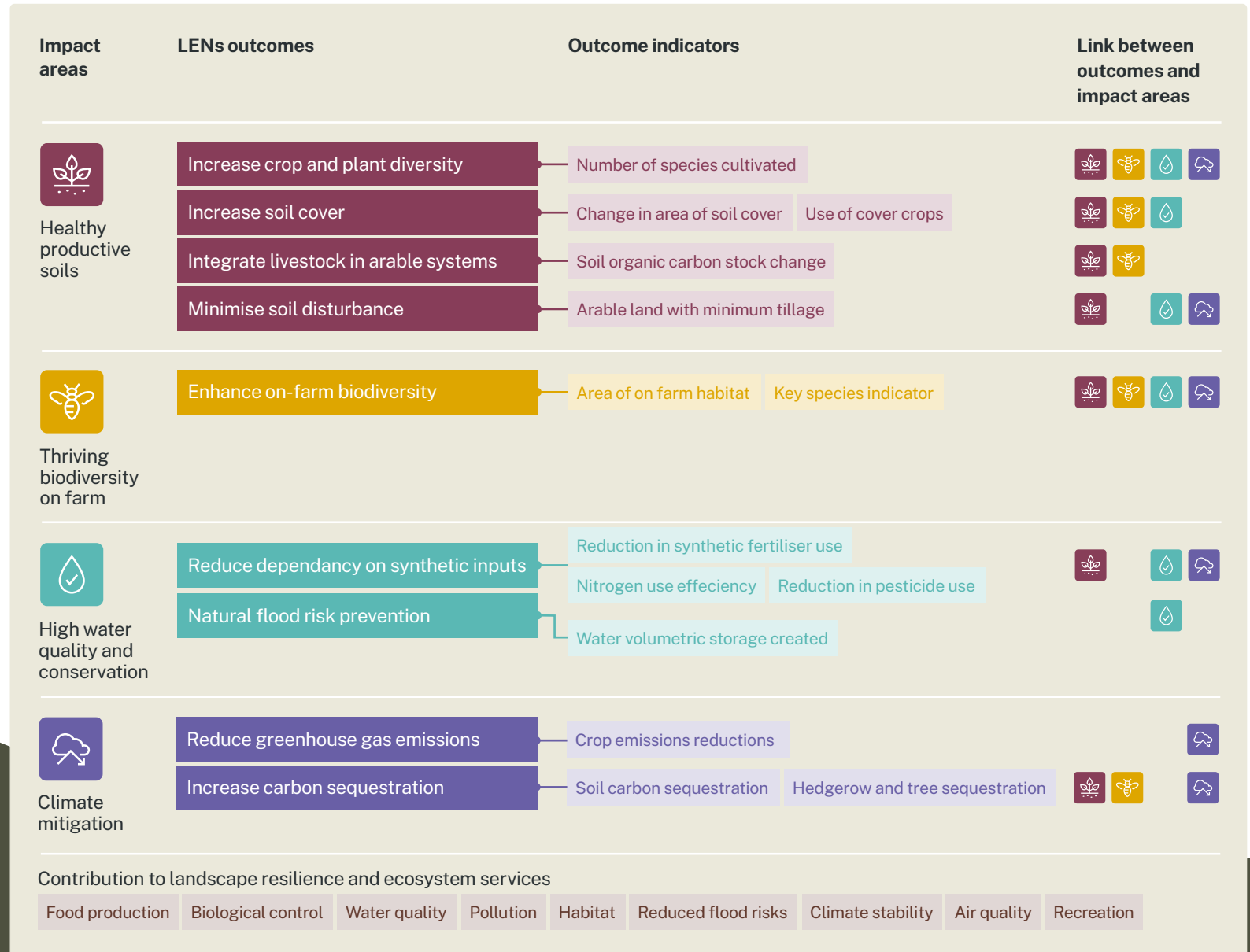
Participating farms adopt a range of measures that include **a) increasing crop and plant diversity, b) increasing soil cover, c) minimising soil disturbance, d) integrating livestock into arable systems, e) enhancing on-farm biodiversity and habitats.** These are not specific to LENS, but build on principles supported by the regenerative agriculture movement, such as the farmer-led European Alliance for Regenerative Agriculture (EARA).

These practices help protect habitats and food production, improve air and water quality, mitigate flood risks and increase stored carbon. We track changes year-on-year using outcome indicators (see image), to understand how practices interact to support and accelerate wider landscape resilience.



*We work with LENS to mitigate our impact on the environment and build more resilience to our sourcing, helping to create a more regenerative food system. We work closely and collaboratively with the LENS team to achieve success.*

**Cécile Doinel, Head of Regenerative Agriculture Purina Europe**





# Healthy productive soils

## Why does this matter?

Healthy, productive soils are essential for food quality and quantity<sup>2</sup>, play a critical role in storing carbon (to mitigate climate change), and are the foundation for nature and biodiversity to thrive. In the UK, soil stores an estimated 10 billion tonnes of carbon<sup>3</sup> and soil carbon loss contributes to 21% of GHG emissions from the agricultural sector<sup>4</sup>. In Europe, good soil management is a core objective of the Common Agricultural Policy (CAP), owing to its potential both to reduce emissions and protect carbon stores<sup>5</sup>. Evidence shows that practices such as reduced tillage and cover cropping enhance soil carbon sequestration and that there are marked benefits for wildlife areas where regenerative practices are introduced<sup>6</sup>.



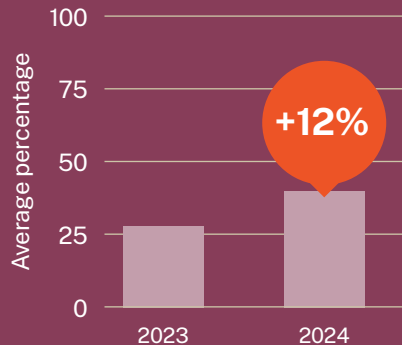
*We integrated and applied manures to build up organic matter in our soils to help retain moisture and structure in times of drought and to help filtration in wet times. This is a long term investment in the farm as the application of organic material needs to be applied annually to deliver the optimum benefits. Without the support of the LENs funding I wouldn't have been able to introduce this measure on my farm.*

Mark Terry, Farmer Yorkshire LENs

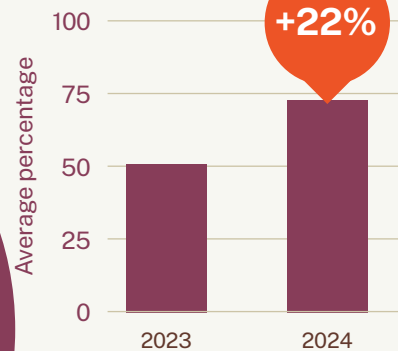


Between 2023 and 2024, an average of **1.83 t/ha** additional soil organic carbon was calculated across LENs farms. These results confirm recent studies that indicate **combining multiple practices** is an effective way to capture more soil carbon.<sup>1</sup>

Percentage arable land planted with cover crops



Percentage arable land under minimum tillage



## LENs practices contributing to improved soil

**10,231 ha**  
Minimise soil disturbance

**8,670 ha**  
Substitute synthetic fertiliser with organic fertiliser

**5,278 ha**  
Keep soil covered/maintain living roots in soil

**686 ha**  
Maximise plant diversity



Minimum tillage equipment acquired with LENs support in Poland





# Thriving biodiversity on farm

## Why does this matter?

Planting wildflower and buffer strips along field edges or near watercourses helps reduce runoff and keeps water cleaner, providing habitats for frogs, aquatic plants, and insects to flourish. Trees and hedgerows offer a habitat for a range of species, provide shelter for livestock, reduce wind and water erosion and, like soils, play a critical role in carbon sequestration<sup>7</sup>.

Studies<sup>8</sup> show that planting hedgerows and woodland is one of the most important interventions to support bumblebees and other pollinator populations in agricultural landscapes. The presence of bees can lead to increased yields and other benefits—e.g. earlier seed set and more compact plants, reducing pod shattering.



LENs funding has allowed us to purchase equipment to create and manage habitats better, implement measures such as catch crops delivering great benefit to farmland biodiversity above and below the ground and also to monitor and survey the biodiversity benefits of these measures so we know the positive effect that we are having.

Patrick Barker, Farmer East of England LENs



Between 2023 and 2024 **47 hectares** of diverse habitats for biodiversity were created or restored on farms, **supporting life** above (birds and pollinators) and below ground (earthworms and soil microorganisms).

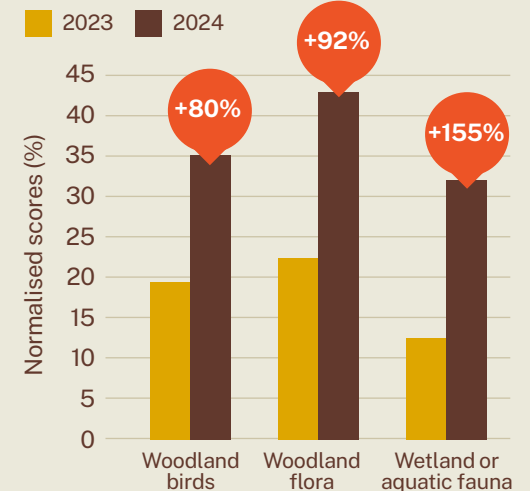
### Top 3 new habitats created in 2024



New species-rich hedgerow with native trees and shrubs planted by participating farm in LENs East of England



### Year-on-year change in score per key species group\*



\*The key species score calculator (from the Cool Farm Biodiversity module v2) assigns points to farm management practices that support biodiversity across different species groups. The higher the score, the better for biodiversity. Note that we have normalised the scores for comparability.



# High water quality and conservation

## Why does this matter?

Activities on farms can have a huge impact on surrounding water quality and health. Fertiliser, herbicide and pesticide run off is a major source of water pollution, with nitrates and phosphates from fertilisers causing damage to aquatic life<sup>9</sup>. An estimated 40% of river pollution in the UK comes from agriculture<sup>10</sup>. Water withdrawals for irrigation can reduce water flows and levels<sup>11</sup>. Physical damage to property and infrastructure from flooding costs upwards of €5 billion a year in Europe and the UK. Nature-based solutions such as restoring wetlands in flood prone areas provide natural flood defences, improve water quality and are more cost-effective than conventional engineering solutions<sup>12</sup>.

Between 2023 and 2024 there was an average reduction of **14kg/ha of nitrogen** on LENs farms. Reducing dependence on synthetic fertilisers and pesticides combined with nature-friendly approaches reduces the amounts of nitrogen, phosphorus and potentially harmful substances entering rivers and water bodies.

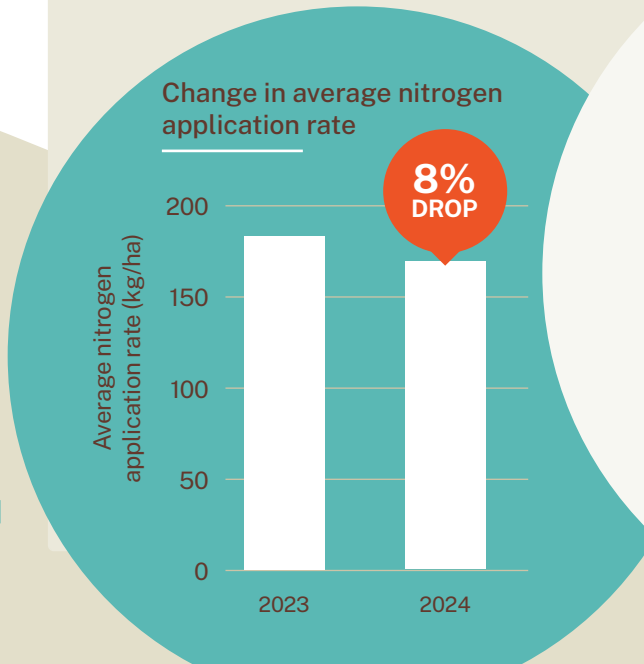


Example of leaky dam creating a natural barrier which slows the water flow, traps sediments, and minimises downstream flooding

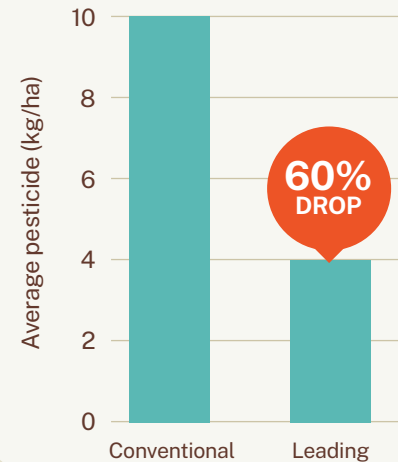


We secured funding to use bio-stimulants which have now become part of our strategy to manage plant health; predominantly they are used early in the growing season to bolster plant health and have enabled a reduction in the use of fungicides. We have also integrated organic manure which has been incredibly useful. LENs funding meant that I could do a deal with livestock farmers. We've built relationships that we are keen to continue.

**Philip Raley, Farmer Yorkshire LENs**



Pesticide usage for farms using conventional and leading practices



Innovative LENs practices contributing to water quality improvements

1. Using soil probes for fertiliser application efficiency
2. Trialling biostimulants
3. Switching to mechanical weeding



# Climate mitigation

## Why does this matter?

Agriculture contributes significantly to GHG emissions in Europe and food production accounts for approximately 26% of global emissions<sup>13</sup>. Shifting agriculture from being a net emitter to a net sink is essential to mitigating these climate change impacts. Tackling emissions on farm can present improved profitability opportunities for farmers (reducing inputs and therefore spending on fuel, fertiliser and feed). Minimising GHG emissions helps mitigate unstable and unpredictable weather patterns, shifting seasons affecting crop flowering, intense heat waves and droughts, extreme rainfall and soil erosion and the emergence of new pests.



*I joined LENs to increase my knowledge and practical experience in soil regeneration farming, which I consider key to adapting to climate change. My aim is to increase the carbon content of the soil, especially because of the low humus content in the Bakonyalja region where I farm. Cover-cropping helps to protect loose and unstructured soils in our erosion and deflation-prone countryside.*

Tóth Szabolcs, Farmer Hungary LENs



In 2024 a total of **49,370 tCO<sub>2</sub>e** was **reduced or removed** across all regions compared to the 2023 baseline, which equates to 100-year sequestration of ~140 ha of newly planted native woodland.

Total carbon reduction/  
removal by category

**-210 tCO<sub>2</sub>e**  
Biomass removals

**-2,770 tCO<sub>2</sub>e**  
Emissions reductions

**-46,390 tCO<sub>2</sub>e**  
Below ground carbon removal



Sunflowers planted as a cover crop in EoE. Cover crops are a good way to increase soil carbon and also good for pollinators and seed eating birds

LENs practices contributing the most to climate mitigation

1. Switching from ploughing to low tillage and direct seeding
2. Increasing the diversity of plants in the crop rotation
3. Using organic fertilisers

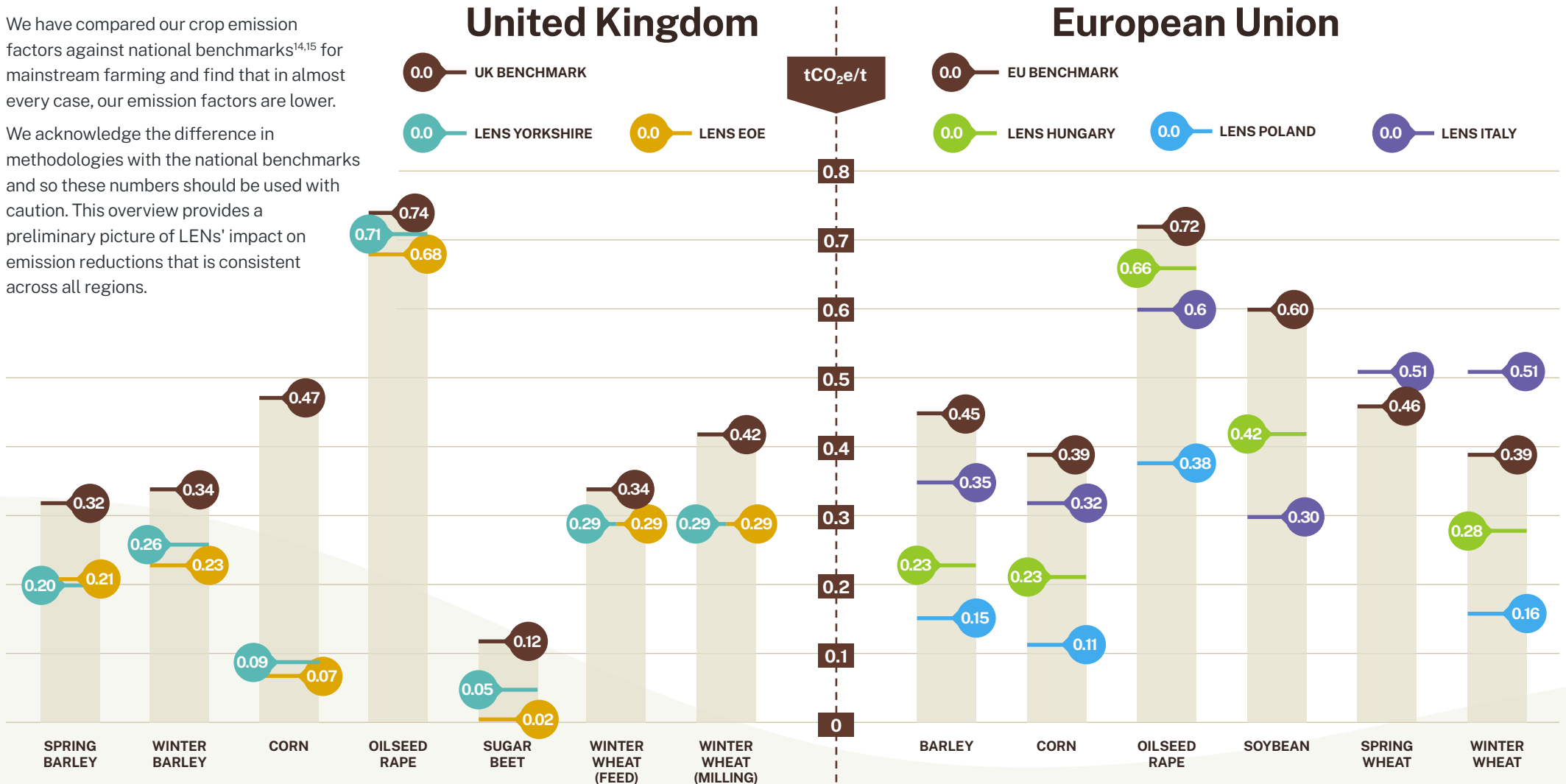
# Benchmarking average emission intensities from farms in LENS

With significant amounts of primary data collected on farm, LENS is starting to build an important bank of farm practice data and localised crop emission factors.

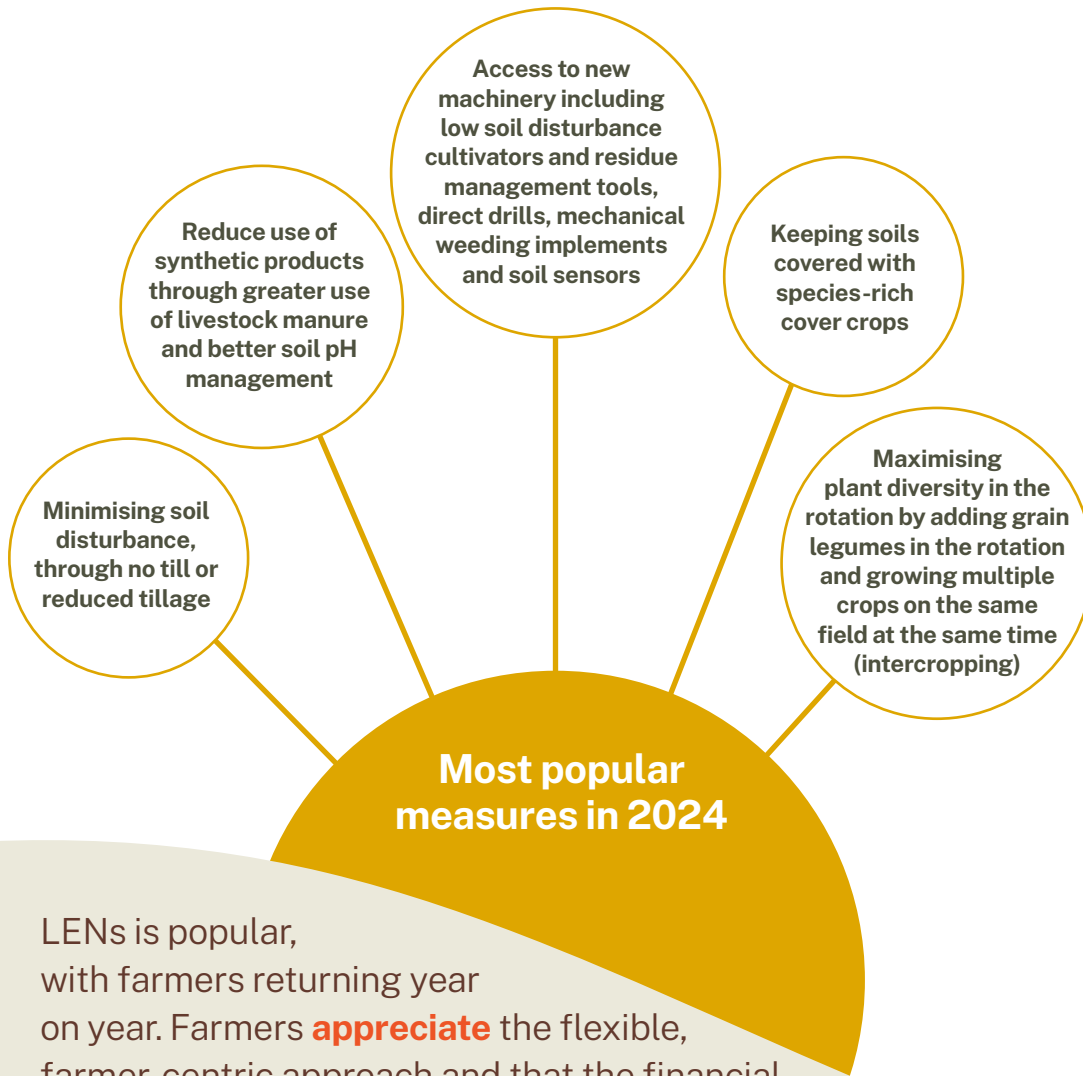
We have compared our crop emission factors against national benchmarks<sup>14,15</sup> for mainstream farming and find that in almost every case, our emission factors are lower.

We acknowledge the difference in methodologies with the national benchmarks and so these numbers should be used with caution. This overview provides a preliminary picture of LENS' impact on emission reductions that is consistent across all regions.

Average emission intensities from farms in LENS regions are lower than conventional emissions factors across major arable crops in Europe



# Farmer benefits



LENs is popular, with farmers returning year on year. Farmers **appreciate** the flexible, farmer-centric approach and that the financial support through LENs is meaningful. By helping to remove the financial risks of transitioning to **regenerative farming**, we also create space for innovation and sharing knowledge.

We offer funding against 100+ land management practices, tailored to the region and reviewed every year. Practices may be applied on specific fields or across the whole farm. The flexibility in type and duration of contracts gives farmers more choice to source funding which suits their business interests.

**Innovations and learning**

If these pre-defined practices do not cover something of interest to farmers, they can apply for innovation funding. Proposed by farmers, innovations tend to address issues that are specific to a region (such as outbreaks of a crop pest) whilst also delivering outcomes sought by funders (guaranteed crop supply). Innovations may be used for trials, which generate knowledge for both the applicant and other farmers in the region.

In 2024, over €200,000 was spent on innovation funding across the programme.



*Trying out new things comes with a big financial risk that most farmers can't afford. LENs means that we can experiment with a new machine or method that just wouldn't be a viable risk otherwise.*

**Andy Falkingham, Farmer Yorkshire LENs**



*I really do think LENs is coming to a point where it's maturing. It feels straightforward and transparent. The costing of things has more flexibility...that can be tailored to your region and farm, reflecting the true cost, not a national figure. LENs is real money to undertake activities that drive real change and impact.*

**Guy Thallon, Farmer Yorkshire LENs**



Farmers are making use of LENs innovation funding to test the effectiveness of biological nitrogen fixation, incorporating chopped straw in the ground, intercropping cereals with legumes, trialling semi-permanent understory clover and mechanical weeding solutions.

**Access to machinery**

LENs appreciates how important machinery is to help farmers implement new farming practices and technologies. In 2024, close to €600,000 was spent on funding for machinery and equipment. Farms in LENs were able to receive funding towards low disturbance cultivators and subsoilers, direct drills, precision fertiliser applicators, mulching mowers, agricultural drones and soil nutrient sensors.

# Funder benefits

LENs makes it easier for organisations to fund regenerative agriculture. Organisations can **reduce value chain** and **water catchment risks**, while building business resilience. Co-funding reduces costs and maximises outcomes.



### Reducing risks:

LENs works with funders to improve the resilience of their supply chains and their business. The types of risk we help mitigate include: sourcing risks, by stabilising yields for crops of interest; reducing the cost of operating in a landscape; and helping to mitigate the impacts of floods and droughts.



### Biodiversity & nature goals:

By providing detailed reporting on biodiversity, water and soil health metrics, LENs enables some of the most advanced reporting towards corporate and public-sector sustainability goals in the market. This also provides accelerated learning with real-world insights on which on-farm practices generate the most impact.



### Scope 3 & carbon removals:

LENs enables organisations to make progress towards their Net Zero goals by providing primary carbon data on both Scope 3 carbon reduction and carbon removals in their value chains. Reporting is aligned with international carbon accounting standards. For organisations that do not source farm products from the landscape (such as water companies), we provide reportable contributions towards their climate targets. We produce custom impact reports for each funding organisation, ensuring they have ready-to-report metrics. This is made possible by our ground-breaking MRV allocation protocol.



### Reduced costs, maximised outcomes:

LENs implements regenerative agriculture programmes for funders, which means lower management time and costs compared to a funder doing it alone. This is particularly helpful for businesses with complex value chains, who typically don't have direct access to farmers. By bringing together organisations across the rotation, they can maximise outcomes and claims using fewer resources. In the East of England, LENs brought together eight organisations in 2024, made up of food, beverage and water companies and local authorities. This meant that 51% of measures were co-funded (up from 29% in 2023). In Poland, LENs funders are saving 29% in their cost per tonne of carbon thanks to LENs' unique fund pooling mechanism.



### Why does co-funding matter?

The more co-funding farms receive, the more environmental benefits will be accrued, which is good for farmers, funders and the landscape. Co-funding provides a genuine value for money proposition for funders, as it means measures can be 'stacked' on farms (multiple measures on the same farms or fields). This reduces the cost per hectare and generates greater impact with the same resources.



*LENs offers an efficient way to pay farmers to manage their land in ways that protect the water environment. Working with others, we can select a broad range of measures that benefit soil, water and biodiversity.*

**Chris Gerrard, Anglian Water**



SCIENCE  
BASED  
TARGETS

DRIVING AMBITIOUS CORPORATE CLIMATE ACTION



GREENHOUSE  
GAS PROTOCOL

# LENs Regen Pathway

In 2025, LENs introduced the Regen Pathway, a framework for funders and farmers to provide greater clarity on how to make the most of LENs funding and technical support. It has four levels, with increasing ambition in each one.

LENs supports farmers at all levels, appreciating that the transition to regenerative farming takes several years to yield transformational results<sup>16</sup>. By using the framework, farmers can determine their level, and what practices to adopt to secure funding to move up. In doing so, they monitor their progress towards regenerative farming.

The LENs Regen Pathway meets and exceeds the SAI Platform Regenerating Together Framework requirements, demonstrating alignment with sector best-practice.



MRV captures the benefits and impacts of our funding on water, biodiversity, carbon and other natural capital and allows the catchment team to show our company and regulators, the positive impacts our funding is having across the wider landscape and how it contributes to us meeting our regulatory goals within the Water Industry National Environment Programme.

Danny Coffey, Catchment and Biodiversity Team, Affinity Water



## LENs Regen Pathway

Principle addressed	Criteria	Transition funding		Regen Pathway Premium	
		Entry	Engaged	Advanced	Leading
		Rewards farmers a payment-per-practice and supports their transition to the next level		Rewards farmers a set price per hectare if they reach these thresholds	
<b>Crop diversity</b>	What is the % of your arable land with 3 or more different types of crops over 3 years?	≥30%	≥30%	≥50%	≥70%
<b>Keep soil covered</b>	What is the % of your arable land that is covered at least 10 months of the year?	≥30%	≥30%	≥50%	≥70%
<b>Keep soil covered</b>	What is the % of your arable land where a cover crop practice will be used this year?	n/a	≥10%	≥30%	≥50%
<b>Minimise soil disturbance</b>	What is the % of your arable land that is under minimum tillage (<15cm)?	n/a	≥20%	≥50%	≥70%
<b>Reduce use of synthetic inputs</b>	How many integrated crop nutrient management principles do you apply?	n/a	≥1 principle	≥3 principles	all 4 principles
<b>Reduce use of synthetic inputs</b>	How many integrated pesticides management principles do you apply?	n/a	≥1 principle	≥3 principles	all 5 principles
<b>Land set aside for nature</b>	What is the % of agricultural land set aside as (semi) natural habitat or agroforestry?	n/a	≥1%	≥5%	≥5%

# End notes

1. Petersson, T. (2024). Carbon farming practices for European cropland: A review on the effect on soil organic carbon. Soil and Tillage Research. Volume 247. <https://doi.org/10.1016/j.still.2024.106353>
2. FAO, (2015), Healthy Soils are the Basis for healthy food production, <https://www.fao.org/soils-2015/news/news-detail/en/c/277682/>
3. Soil Association, (2021) Saving our Soils: Healthy soils for climate nature and health <https://www.soilassociation.org/media/24941/saving-our-soils-report-dec21.pdf>
4. Climate Change Committee (2021) The Sixth Carbon Budget Agriculture and land use, land use change and forestry, <https://www.theccc.org.uk/wp-content/uploads/2020/12/Sector-summary-Agriculture-land-use-land-use-change-forestry.pdf>
5. EU Cap Network (2024) Rough estimate of the climate change mitigation potential of the CAP Strategic Plans (EU-18) over the 2023-2027 period Summary report for 19 CAP Strategic Plans [https://agriculture.ec.europa.eu/document/download/7289aad3-2fa7-415a-9247-996b110e83d6\\_en?filename=report-rough-ghf-estimate-eu-18\\_en.pdf](https://agriculture.ec.europa.eu/document/download/7289aad3-2fa7-415a-9247-996b110e83d6_en?filename=report-rough-ghf-estimate-eu-18_en.pdf)
6. Lal, R. (2020). Regenerative agriculture for food and climate. Journal of Soil and Water Conservation, 75(5), 123A-124A. <https://doi.org/10.2489/jswc.2020.0620A>
7. Climate Change Committee (2021) The Sixth Carbon Budget Agriculture and land use, land use change and forestry, <https://www.theccc.org.uk/wp-content/uploads/2020/12/Sector-summary-Agriculture-land-use-land-use-change-forestry.pdf>
8. Gardner, E., Breeze, T., Image, M. (2023) Co-benefits from tree planting in a typical English agricultural landscape: Comparing the relative effectiveness of hedgerows, agroforestry and woodland creation for improving crop pollination services <https://www.sciencedirect.com/science/article/pii/S0264837722005245>
9. Soil Association (article) Better Rivers, an end to pollution, <https://www.soilassociation.org/causes-campaigns/better-rivers-an-end-to-pollution/>
10. Institute of Fisheries Management, (2022) Water pollution: How clean are the UK's rivers and lakes? <https://ifm.org.uk/water-pollution-how-clean-are-the-uks-rivers-and-lakes/#:~:text=The%20main%20reasons%20for%20poor,of%20water%20pollution%20in%20England cited from https://www.bbc.co.uk/news/science-environment-59898988>
11. WBSCD & OP2B (2024), Business guidance for deeper regeneration, Regenerative Agriculture metrics: Water metrics <https://www.wbcsd.org/wp-content/uploads/2024/06/Regenerative-Agriculture-Metrics-Water-chapter.pdf>
12. Vicarelli, M. (2024). On the cost-effectiveness of Nature-based Solutions for reducing disaster risk. Science of The Total Environment, Volume 947, 15 October 2024, 174524 <https://www.sciencedirect.com/science/article/abs/pii/S0048969724046722?via%3Dihub>
13. Ritchie, H. (2019) Food production is responsible for one-quarter of the world's greenhouse gas emissions; Our World in Data <https://ourworldindata.org/food-ghg-emissions>
14. AHDB, CHAP & ADAS (2022). Benchmarking greenhouse gas emissions for the UK arable and horticultural sector [https://chap-solutions.co.uk/wp-content/uploads/2022/08/CHAP\\_Net\\_Zero\\_Report\\_0822.pdf](https://chap-solutions.co.uk/wp-content/uploads/2022/08/CHAP_Net_Zero_Report_0822.pdf)
15. European emission factors taken from EcolInvent database
16. Deloitte, Unilever, PepsiCo, OP2B & WBSCD (2025) Closing the gap: An analysis of the costs and incentives for regenerative agriculture in Europe <https://www.wbcsd.org/wp-content/uploads/2025/03/Closing-the-gap-An-analysis-of-the-costs-and-incentives-for-regenerative-agriculture-in-Europe-1.pdf>

**LENS<sup>®</sup>** | **LANDSCAPE  
ENTERPRISE  
NETWORKS**

7 Fenlock Court  
Blenheim Business Park  
Long Hanborough  
Oxfordshire  
OX29 8LN  
United Kingdom